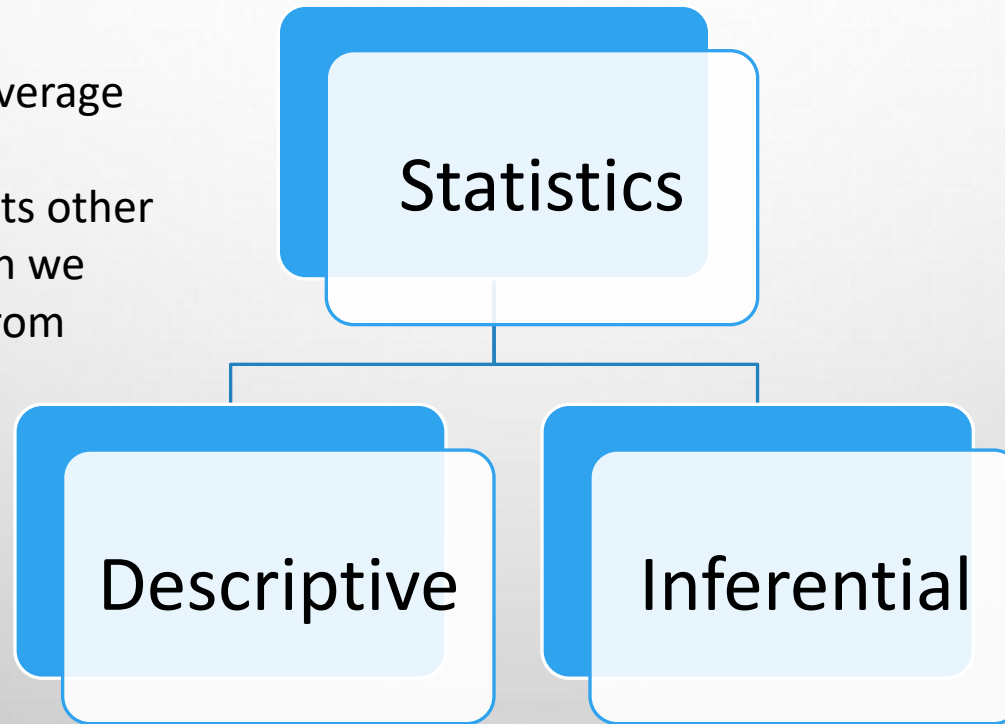


The background of the slide is a light gray gradient. It is decorated with numerous realistic water droplets of various sizes. Some droplets are large and prominent, while others are small and subtle. They are scattered across the slide, with a higher concentration in the top-left and bottom-right corners. The droplets have a glossy, reflective surface with highlights and shadows, giving them a three-dimensional appearance.

VARIABLES AND ITS TYPES

It allows us to describe the average person to see how well that description fits or does not fits other people, and to see how much we can generalize our findings from studying a few people.





Descriptive Statistics

- *Presentation*
 - *Organization*
 - *Summarization*
- 

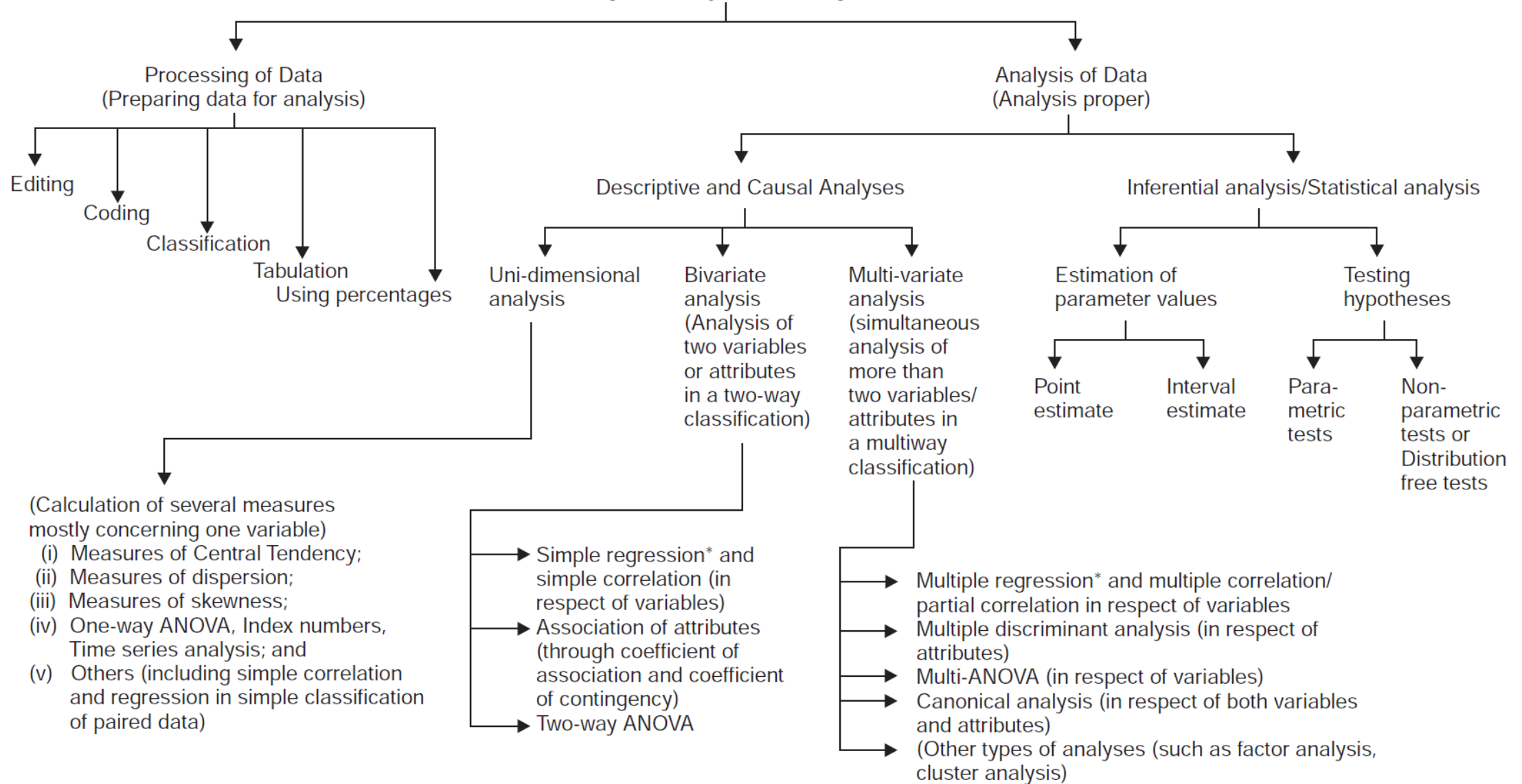


Inferential Statistics

- *Generalize from our sample of data to a large group of subjects*
- 

Analysis of Data

(in a broad general way can be categorised into)



* Regression analysis (whether simple or multiple) is termed as Causal analysis whereas correlation analysis indicates simply co-variation between two or more variables.

Variables

- *Simply what is being observed or measured*
- *The observation made on variables are stored in the form of data*
- *Things that are changing in an experiments*
- *It is any factor, trait , state , condition which exist in differing amounts or types.*
- *Variables are quantitative or qualitative which varies from individual to another*

